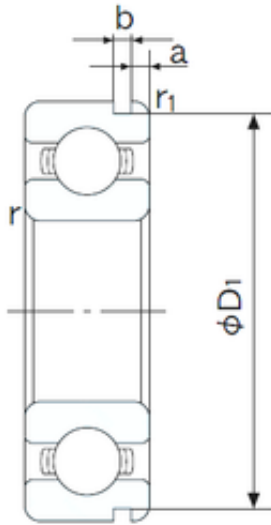




Bearing equipment manufacturing Co., Ltd



95 mm x 130 mm x 18 mm NACHI 6919N deep groove ball bearings

Bearing No. 6919N

Size	95x130x18 mm
Bore Diameter	95 mm
Outer Diameter	130 mm
Width	18 mm
d	95 mm
D	130 mm
B	18 mm
C	18 mm
a	3.3 mm
b	1.3 mm
r min.	1.1 mm
r1 min.	0.5 mm
D1	127.6 mm
Weight	0.576 Kg
Basic dynamic load rating (C)	33,5 kN
Basic static load rating (C0)	33,5 kN
(Grease) Lubrication Speed	4700 r/min
Bore Type	Cylindrical Bore
Enclosure	Open
Configuration	Single Row
Bore Size	95 mm
Outside Diameter	130 mm
Width	18 mm
Fillet Radius/Chamfer	1.1 mm
r1	0.5 mm

6919N Bearing 2D drawings and 3D CAD models



Bearing equipment manufacturing Co., Ltd

Groove Width	1.3 mm
Groove Diameter	127.6 mm
a (max)	3.3 mm
Dynamic Load Rating	33,500 N
Static Load Rating	33,500 N
Limiting Speed - Grease	4,800 rpm
Limiting Speed - Oil	5,700 rpm
Factor fo	16.5
Radial Clearance	0.012 to 0.036 mm
da (min)	101 mm
Da (max)	124 mm
Dx (min)	137 mm
ra (max)	1 mm
Cy (max)	4.1 mm