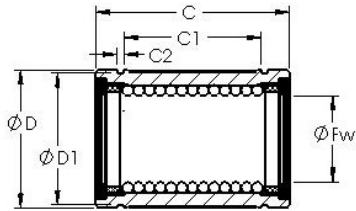


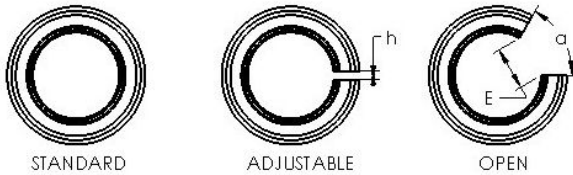


# Bearing equipment manufacturing Co., Ltd



## AST LBB 12 OP linear bearings

Bearing No. LBB 12 OP



Bore Diameter	19,05 mm
Bearing Type	open type
Dynamic Load Rating (Cr)	137
Static Load Rating (Cor)	378
Shaft Dia. (Fw)	0.750
Outside Dia. (D)	1.250
Length ( C )	1.625
Groove-to-groove length (C1)	1.166
Groove Width (C2)	0.056
Groove Dia. (D1)	1.194
Open Gap (E)	0.437
Open Gap (a deg.)	60.00
Weight (g)	68.50
Material	52100 chrome steel, or equivalent

LBB 12 OP Bearing 2D drawings and 3D CAD models