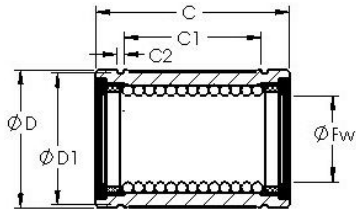


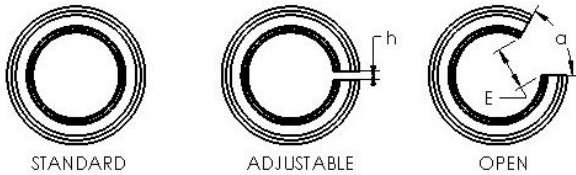


Bearing equipment manufacturing Co., Ltd



AST LBE 20 UU AJ linear bearings

Bearing No. LBE 20 UU AJ



Bore Diameter	20 mm
Bearing Type	sealed, adjustable clearance type
Dynamic Load Rating (Cr)	617
Static Load Rating (Cor)	1,150
Shaft Dia. (Fw)	20.000
Outside Dia. (D)	32.000
Length (C)	45.000
Groove-to-groove length (C1)	28.000
Groove Width (C2)	1.600
Groove Dia. (D1)	30.500
Adjustable Open Gap (h)	2.000
Weight (g)	83.50
Material	52100 chrome steel, or equivalent

LBE 20 UU AJ Bearing 2D drawings and 3D CAD models