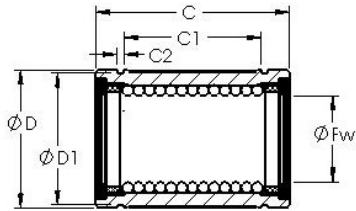


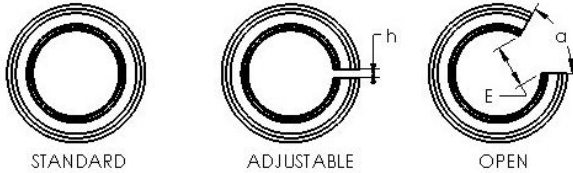


Bearing equipment manufacturing Co., Ltd



AST LBE 25 UU OP linear bearings

Bearing No. LBE 25 UU OP



Bore Diameter	25 mm
Bearing Type	sealed, open type
Dynamic Load Rating (Cr)	1,070
Static Load Rating (Cor)	2,020
Shaft Dia. (Fw)	25.000
Outside Dia. (D)	40.000
Length (C)	58.000
Groove-to-groove length (C1)	40.000
Groove Width (C2)	1.850
Groove Dia. (D1)	38.000
Open Gap (E)	12.500
Open Gap (a deg.)	60.00
Weight (g)	142.00
Material	52100 chrome steel, or equivalent

LBE 25 UU OP Bearing 2D drawings and 3D CAD models