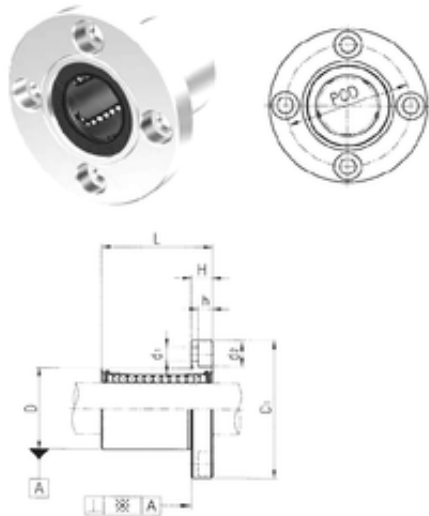




Bearing equipment manufacturing Co., Ltd



Samick LMF12UU linear bearings

Bearing No. LMF12UU

Bore Diameter	12 mm
Outer Diameter	21 mm
d	12 mm
D	21 mm
d1	4,5 mm
d2	8 mm
h	4,4 mm
D1	42 mm
H	6 mm
L	30 mm
PCD	32 mm
Tolerance perpendicularity (C)	12
Weight	0,076 Kg
Basic dynamic load rating (C)	0,41 kN

LMF12UU Bearing 2D drawings and 3D CAD models