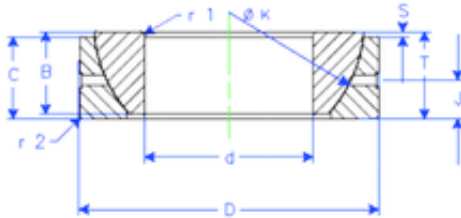




Bearing equipment manufacturing Co., Ltd

65 mm x 100 mm x 23 mm Enduro GE 65 SX
plain bearings



GE 65 SX Bearing 2D drawings and 3D CAD models

Bearing No. GE 65 SX

Size	65x100x23 mm
Bore Diameter	65 mm
Outer Diameter	100 mm
Width	23 mm
d	65 mm
D	100 mm
T	23 mm
B	23 mm
C	22 mm
r1 min.	1,1 mm
r2 min.	1,1 mm
J	11,5 mm
K	94 mm
S	6,5 mm
Weight	0,758859416 Kg
Basic dynamic load rating (C)	180 kN