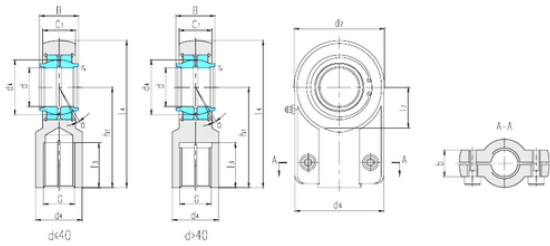




Bearing equipment manufacturing Co., Ltd



LS SIGEW80ES plain bearings

Bearing No. SIGEW80ES

Bore Diameter	80 mm
d	80 mm
B	80 mm
b	48 mm
d2	170 mm
d4	90 mm
d6	148 mm
dk	105 mm
h1	180 mm
l3 min.	92,5 mm
l4 max.	270 mm
l7 min.	78 mm
r min.	1 mm
C1	67 mm
Thread (G)	M64 × 3
Angle	4 °
Weight	15,01 Kg
Basic dynamic load rating (C)	400 kN
Basic static load rating (C0)	695 kN

SIGEW80ES Bearing 2D drawings and 3D CAD models