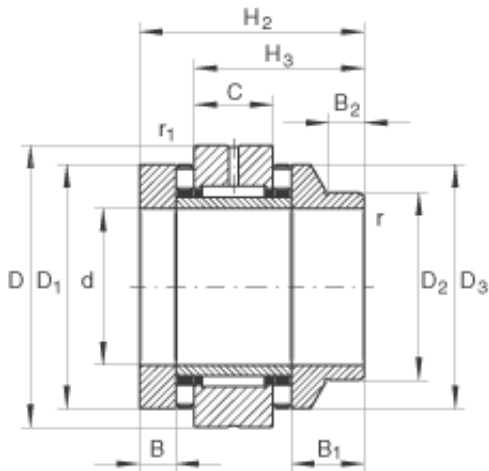




## Bearing equipment manufacturing Co., Ltd



### 65 mm x 125 mm x 17,5 mm INA ZARN65125-L-TV complex bearings

Bearing No. ZARN65125-L-TV

Size	65x125x103 mm
Bore Diameter	65 mm
Outer Diameter	125 mm
Width	103 mm
d	65 mm
D	125 mm
H <sub>2</sub>	103 mm
B	17,5 mm
B <sub>1</sub>	38,5 mm
B <sub>2</sub>	16 mm
C	25 mm
D <sub>1</sub>	110 mm
D <sub>2</sub>	90 mm
D <sub>3</sub>	108 mm
D <sub>a max</sub>	111 mm
d <sub>a min</sub>	88 mm
H <sub>3</sub>	74,5 mm
r <sub>1 min</sub>	0,6 mm
r <sub>min</sub>	0,3 mm
m	4,6 kg / Weight
C <sub>a</sub>	172000 N / Dynamic load rating (axial)
C <sub>0a</sub>	500000 N / Static load rating (axial)

ZARN65125-L-TV Bearing 2D drawings and 3D CAD models



## Bearing equipment manufacturing Co., Ltd

$C_r$	54000 N / Dynamic load rating (radial)
$C_{0r}$	104000 N / Static load rating (radial)
$n_{G\ OI}$	2600 1/min / Limiting speed for oil lubrication (valid only with adequate oil cooling)
$n_{G\ Fett}$	900 1/min / Limiting speed for grease lubrication
$M_{RL}$	4 Nm / Bearing frictional torque
$C_{aL}$	4800 N/ $\mu$ m / Axial rigidity
$C_{kL}$	4000 Nm/mrad / Tilting rigidity
$M_m$	60,1 kg x cm <sup>2</sup> / Mass moment of inertia for rotating inner ring
	1 $\mu$ m / Axial runout (The axial runout data for screw drive bearing arrangements are based on the rotating inner ring)
	ZMA65/105 / Designation of recommended INA locknut